

# FTP Server Application Guide

# CONTENTS

<b>Chapter 1. Topology and USB Device .....</b>	<b>1</b>
1.1 Typical Topology .....	1
1.2 Special Topology .....	2
1.3 USB Device .....	3
<b>Chapter 2. Configuration of the Wireless Router .....</b>	<b>4</b>
<b>Chapter 3. Access via Web Browser .....</b>	<b>10</b>
3.1 WAN Access .....	10
3.2 LAN Access .....	15
<b>Chapter 4. Access via PC Client Software .....</b>	<b>21</b>
4.1 WAN Access .....	21
4.2 LAN Access .....	26

# Chapter 1. Topology and USB Device

**Note:** Here in this guide, we take the configuration procedures of TL-WDR4300 for example.

## 1.1 Typical Topology

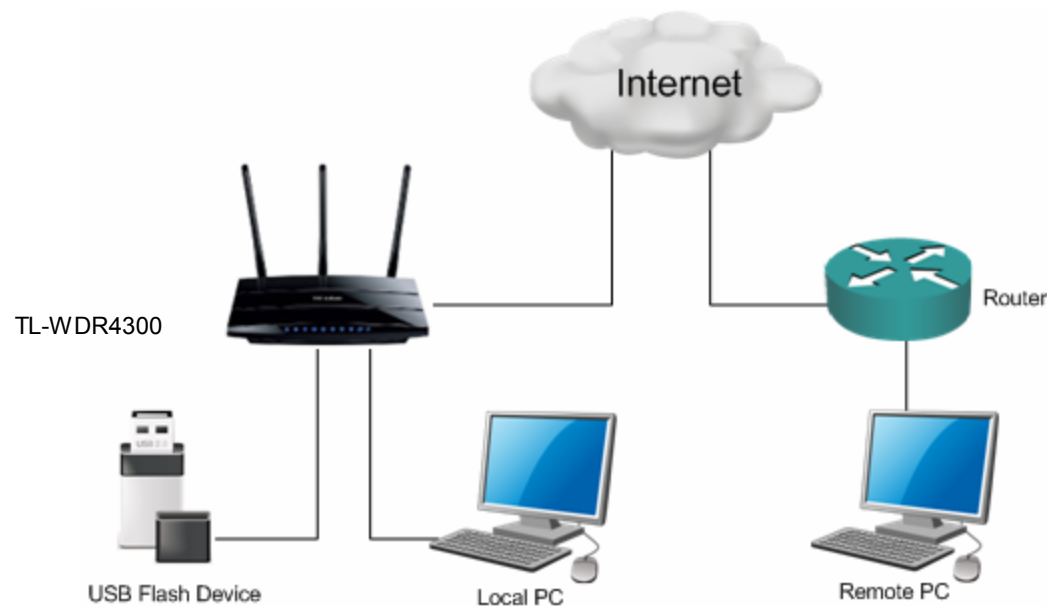


Figure 1-1 Typical Topology

**Note:**

1. USB Flash Device stands for FTP Server in this topology.

2. Local PC here means the PC that is in the same subnet with the FTP Sever. Local PC can access the FTP Server by LAN (Local Area Network), which is called **LAN Access**.
3. Remote PC here means the PC that is not in the same subnet with the FTP Sever. Remote PC needs to go through the Internet if needed to access the FTP server, which is called **WAN Access**.

## 1.2 Special Topology

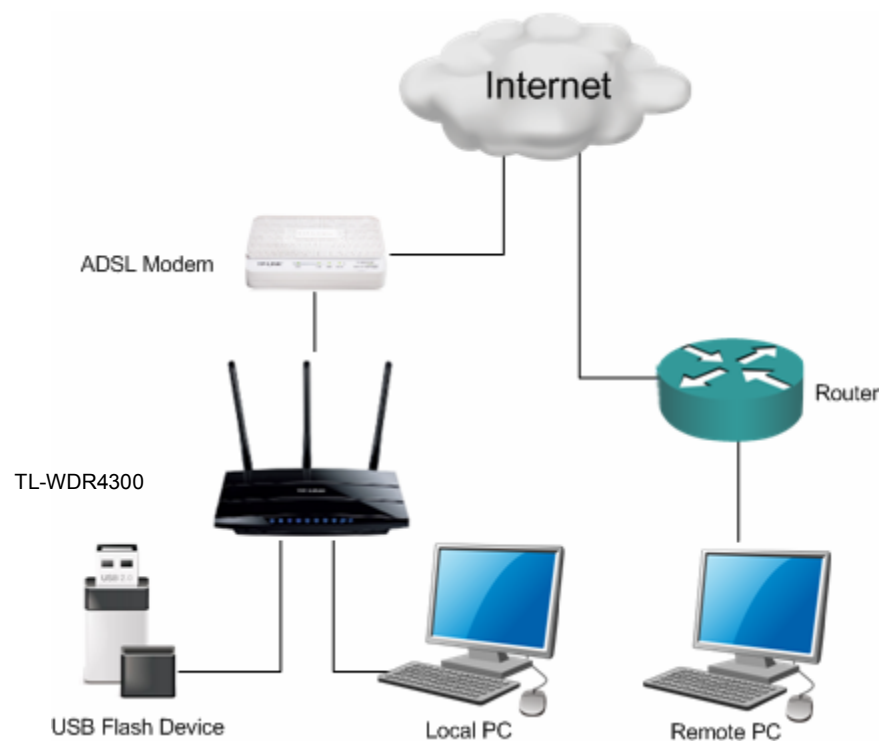


Figure 1-2 Special Topology

**Note:**

The WAN port of TL-WDR4300 is linked to the LAN port of an xDSL modem. If the modem has already obtained a public IP by dialing to the Internet with the username and password provided from your ISP and TL-WDR4300 obtains its IP through Dynamic IP service provided by the modem, the remote PC cannot reach the FTP server through the WAN IP of TL-WDR4300 because the WAN IP of TL-WDR4300 is not a public IP in case of this situation. You can consult the vendor of the modem to modify some settings to let the TL-WDR4300 obtain public IP or assign a specific port for FTP server application with private IP.

**1.3 USB Device**

The USB Flash Device taken for example here is Kingston 1GB USB Flash with one volume which includes 3 folders (tplink01, tplink02, tplink03) and 3 files (test01.doc, test02.doc, test03.doc).

The following part would help you set up a FTP server and download the files from the FTP server through a USB Flash.

## Chapter 2. Configuration of the Wireless Router

To set up your FTP Server, please follow the instructions below:

1. Make sure you have a PC connected to the wireless router, either through wireless connection or wired connection.
2. Plug an external USB hard disk drive or USB flash drive into the USB port on the back panel of the Router.
3. Open a Web browser and type the Router's default domain name <http://tplinklogin.net> in the address field to log in the Web-based configuration utility. Then press **Enter** key.

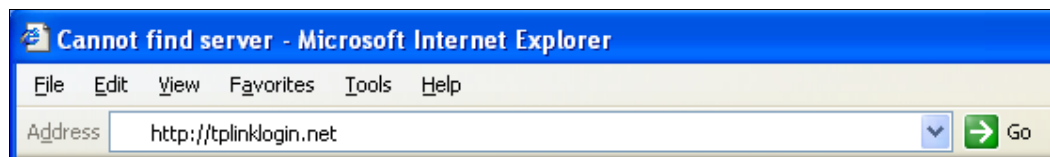


Figure 2-1 Type in Default Domain Name

4. After a moment, a login window will appear. Enter **admin** for the User Name and Password, both in lower case letters. Then click the **OK** button or press the **Enter** key.

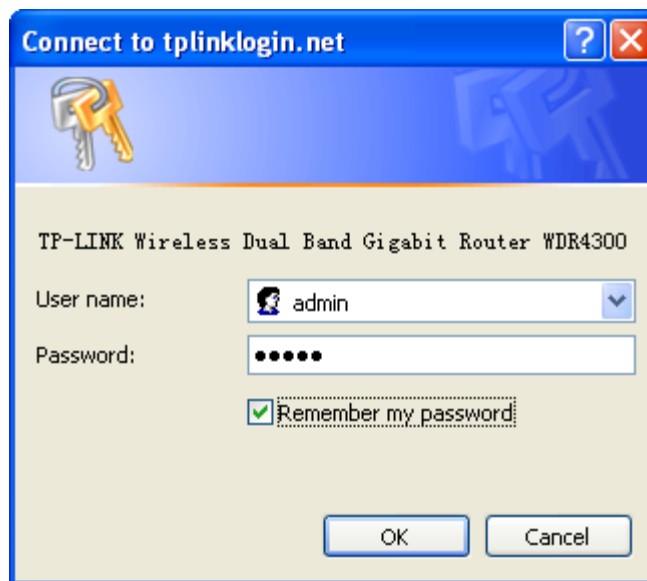


Figure 2-2 Login Window

5. Go to **USB Settings->FTP Server**, the screen will appear as shown in Figure 2-3. The IP behind **Internet Address** would be used to access the FTP server.

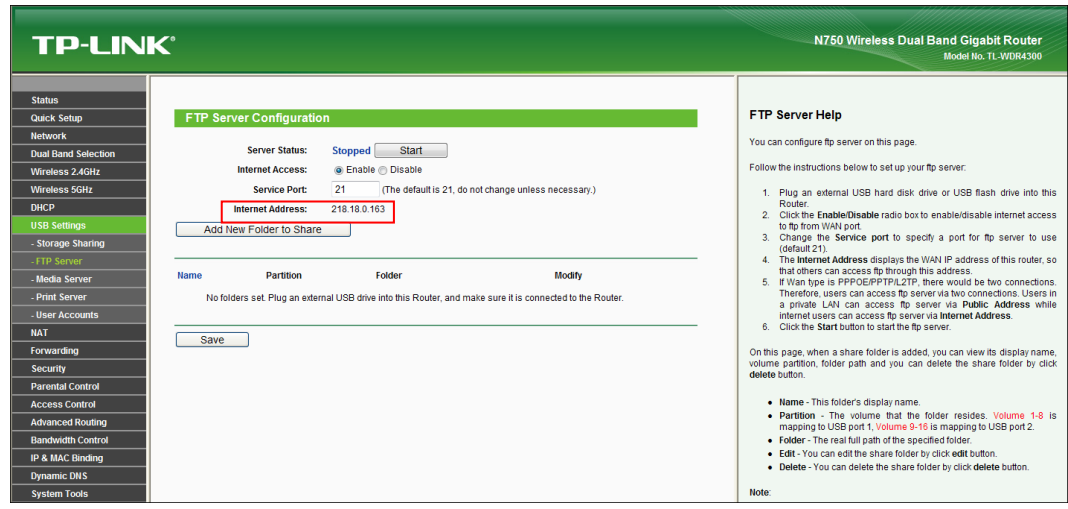


Figure 2-3 FTP Server Configuration

6. Select the **Enable** box to enable **Internet Access** to FTP from WAN port.
7. Specify a **Service Port** for FTP Server. (The default is 21. Do not change it unless necessary.)
8. Click **Add New Folder** to add new folders for the FTP Server. The Local PC or Remote PC can only access the folder you add here.
9. Enter a display name for the share folder in **Display Name** edit box, for example, **TP-LINK**.
10. Select the Share entire partition or a specific folder option. If you select Share entire partition, the folders contained in this partition will all be shared.



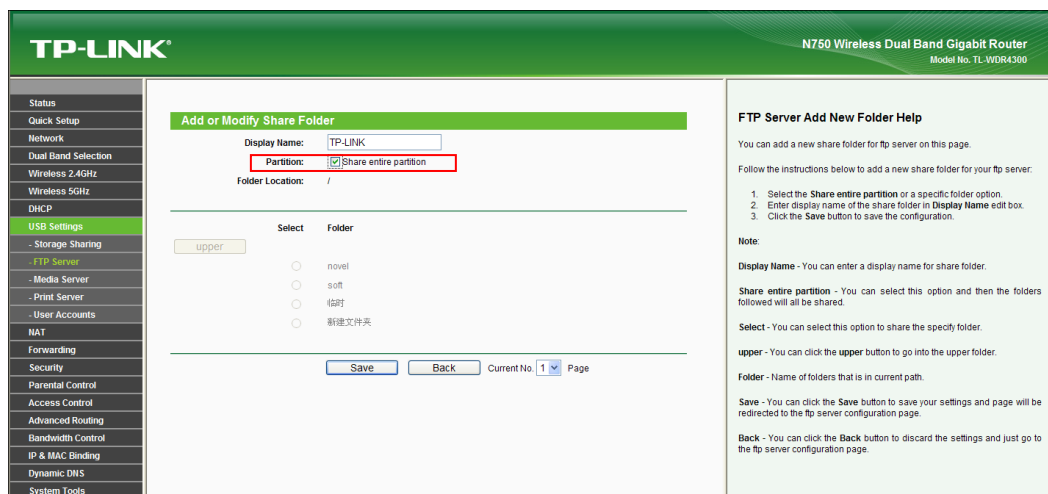


Figure 2-4 Add or Modify Share Folder

11. Click the **Save** button to save the settings and the screen will appear as shown in the figure below.

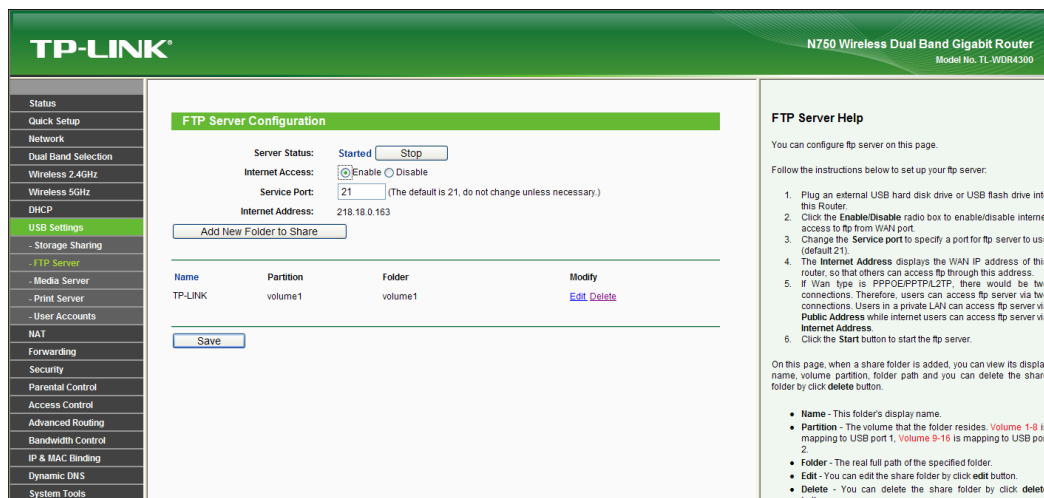


Figure 2-5 Click Save

12. Click the **Start** button to start the FTP Server.

**Note:**

1. The max share folders number is 10. If you want to share a new folder when the number has reached 10, you can delete an existing share folder and then add a new one.
2. The change of the FTP settings will not take effect until the FTP Server is restarted.
3. Currently, there is quantitative restriction of FTP Server user. For example TL-WR1043ND supports 2 users at the same time, and TL-WDR4300 supports 4 users at the same time. Therefore, if you want to log in, make sure that the number of login-user is less than the maximum quantity. Once the number of users had reached the

maximum quantity, the following users would fail to log in even if they have input the correct username and password.

- 4. If a folder contains subfolders, you will see the configuration page as below when you try to **Add New Folder**. You can select the radio box under **Select** to share the specified folder and click the **upper** button to go to the upper folder.

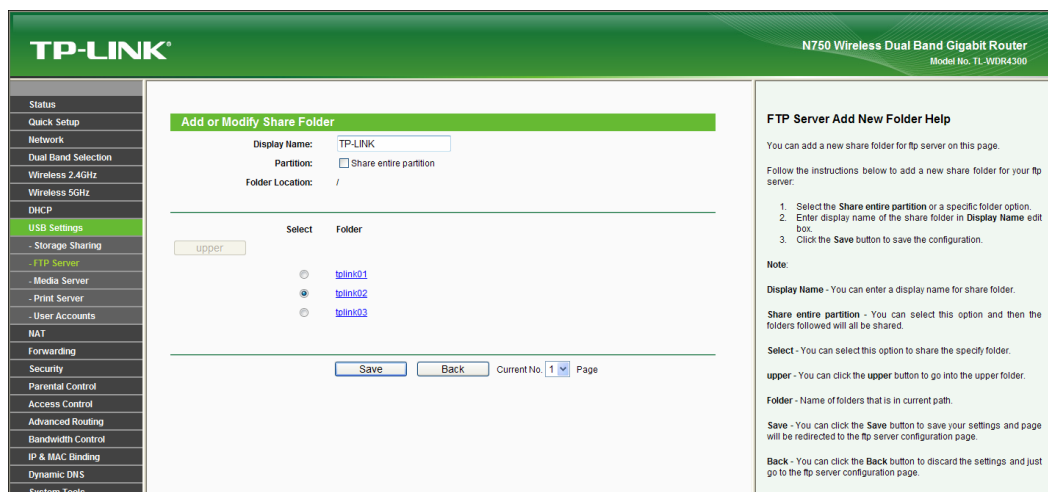


Figure 2-6

## Chapter 3. Access via Web Browser

Here we take the Web browser Internet Explorer for example.

### 3.1 WAN Access

1. Input the **Internet Address** in IE address field. (The address can be found on **FTP Server** page as shown in Figure 3-2. Here is <ftp://218.18.0.163>.)

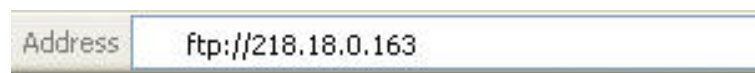


Figure 3-1 Input Internet Address

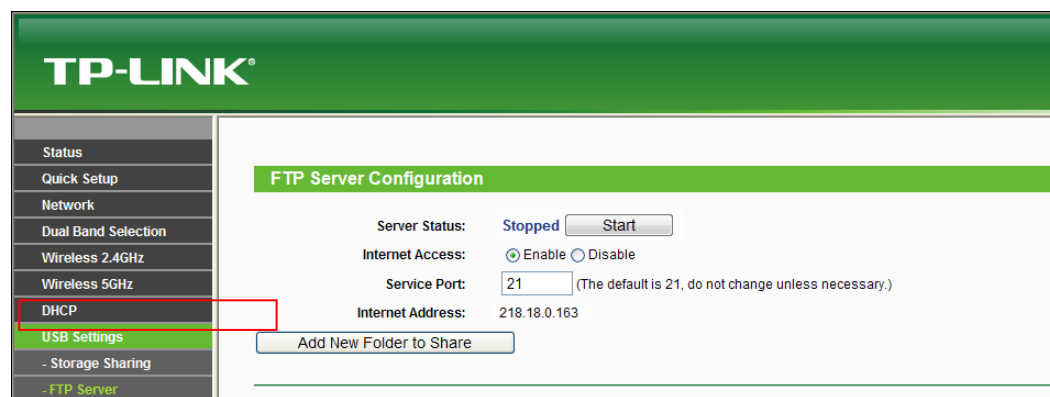


Figure 3-2 Internet Address

2. Press the **Enter** key and a login window will pop up as shown below. Enter the User name and Password of the wireless router (default username: **admin**, default password: **admin**, both in **lower case** letters) and then click **Log On**.

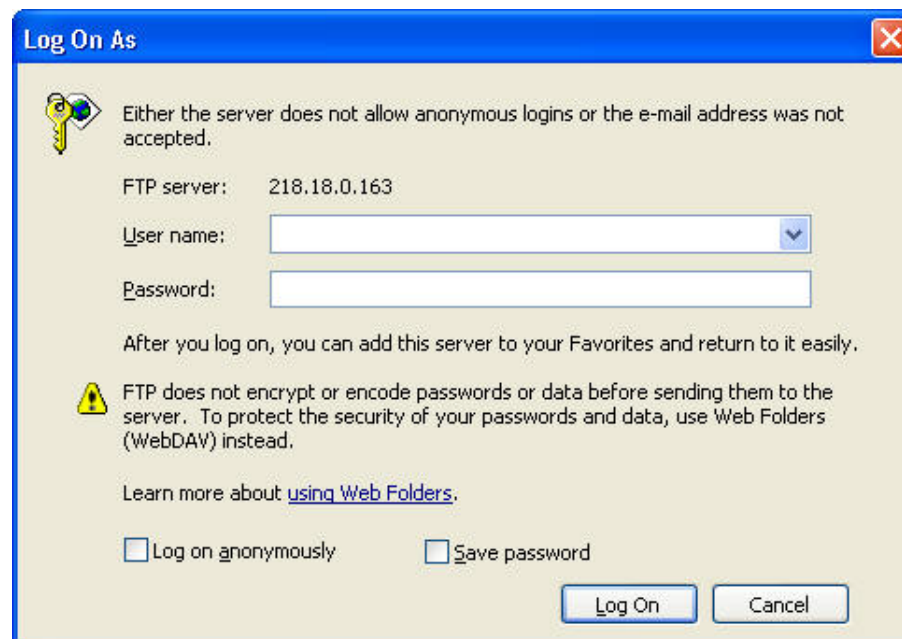


Figure 3-3 Log On

3. Now you can see the IE as Figure 3-4. Double-click the folder **TP-LINK**.

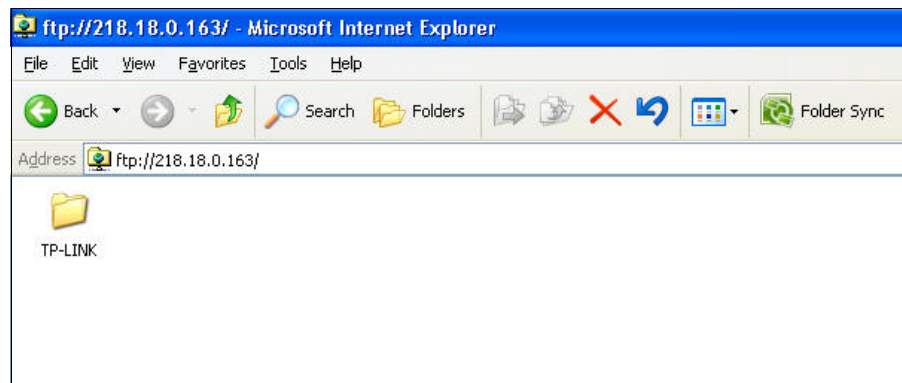


Figure 3-4

4. You will see the files contained in **TP-LINK** as below.

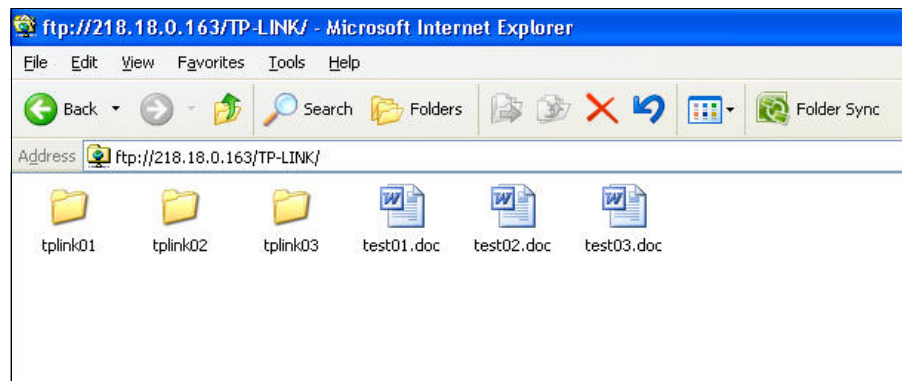


Figure 3-5

5. To open a folder, right click the folder, for example **tplink02**, and select **Open** option.  
To download a file, right click the file, for example **test03.doc**, and select **Copy** option.

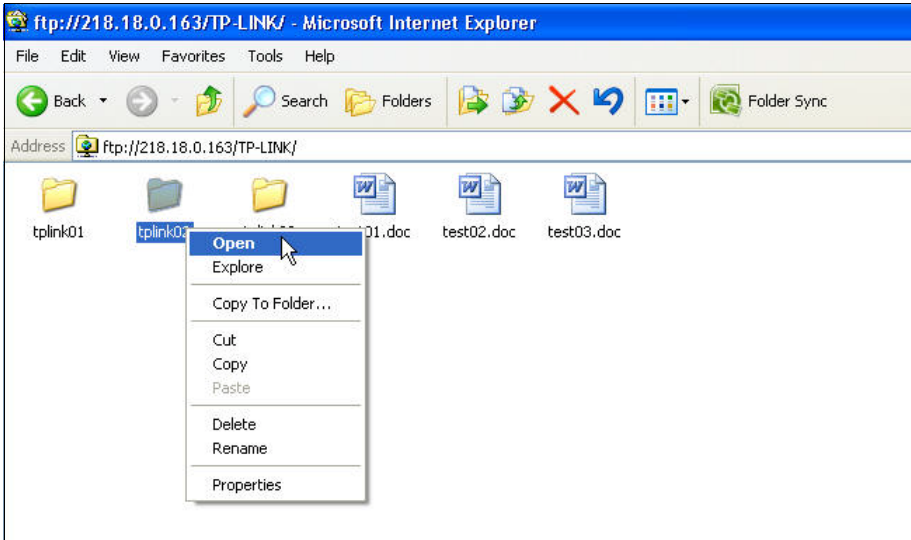


Figure 3-6

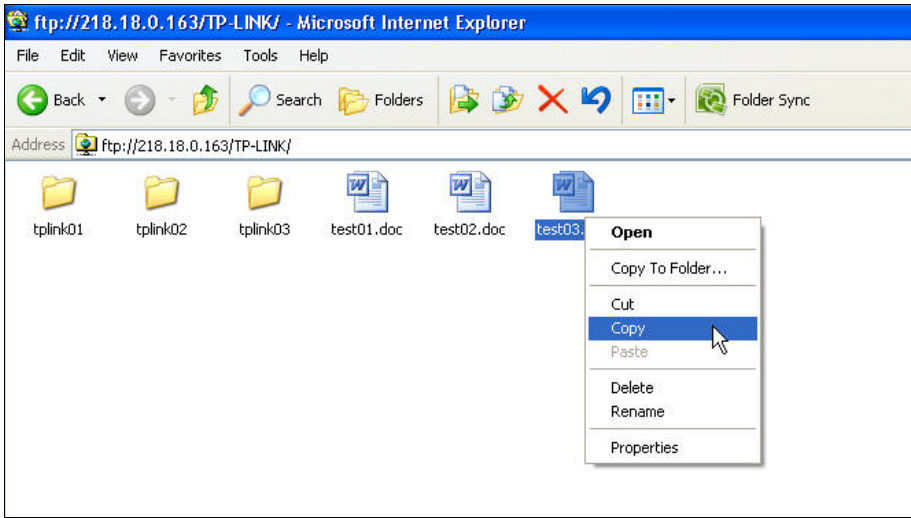


Figure 3-7

**Note:**

When trying to open a file by double-clicking the file, an error will occur as shown in Figure 3-8. We recommend that you use **Copy and Paste** method to download the file on FTP Server.

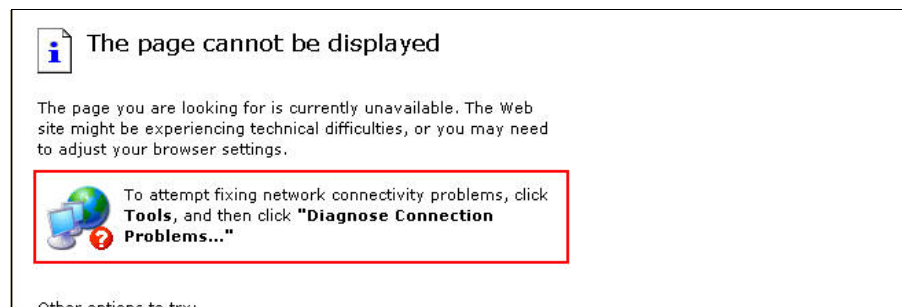


Figure 3-8



## 3.2 LAN Access

1. Go to **Start->Run**, input **cmd** as below, then click **OK** or press **Enter** key.

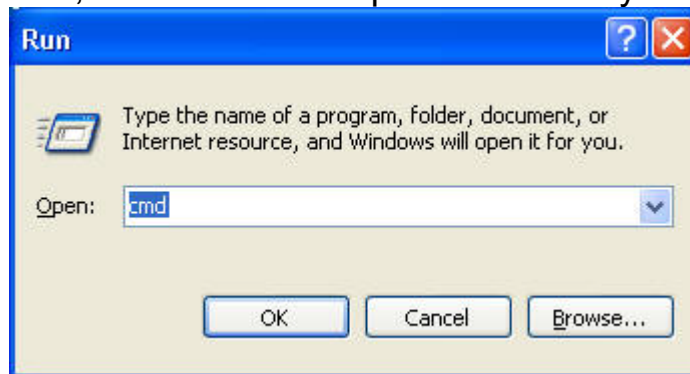


Figure 3-9

2. You will see the interface as below.

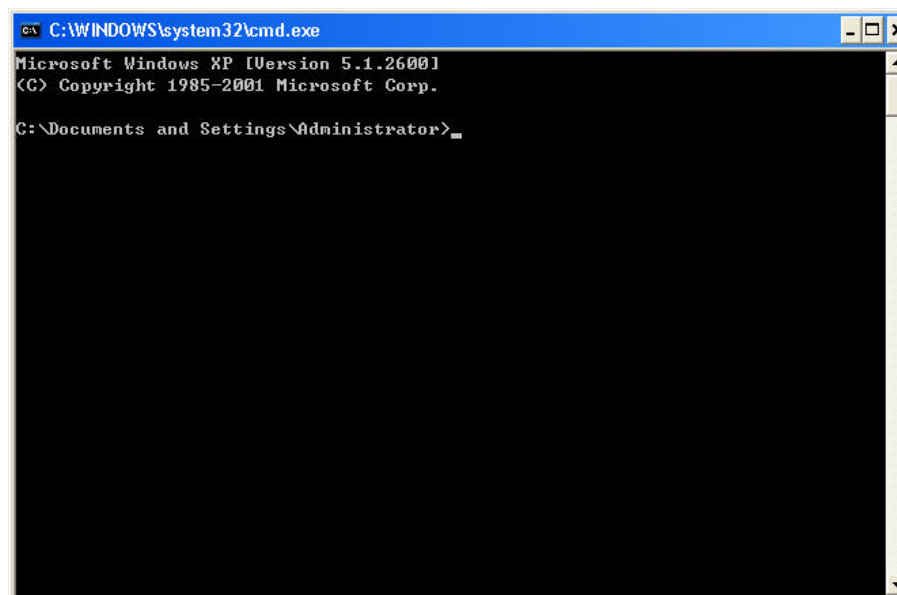


Figure 3-10

3. Input **ipconfig**, and press **Enter** key. Write down the IP address behind **Default Gateway** as shown in Figure 3-11. (Here is 192.168.0.1).

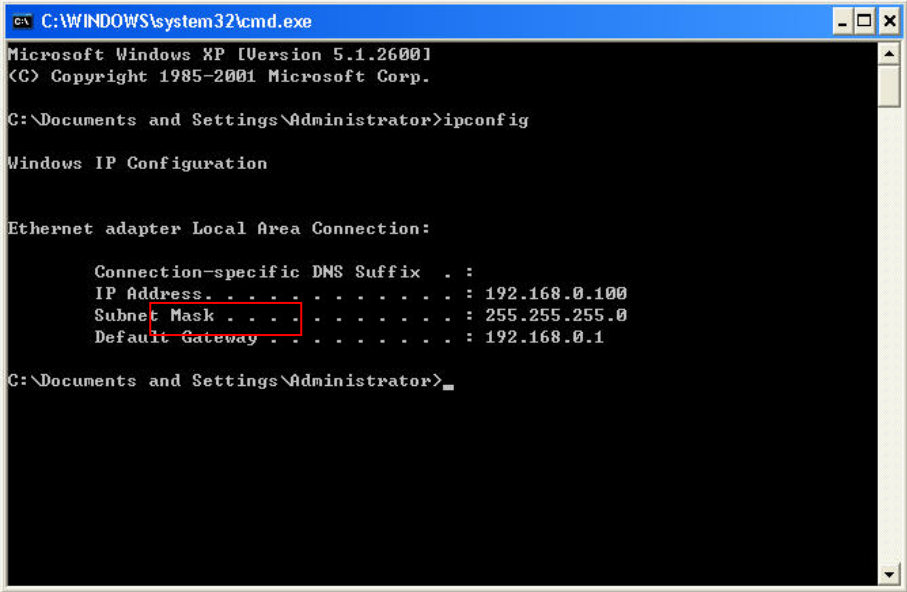


Figure 3-11

4. Input the address (The address written down in Step 3. Here is 192.168.0.1) in IE address field in format of <ftp://192.168.0.1> and then press **Enter** key,

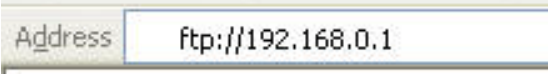


Figure 3-12

A login window will pop up as below. Enter the User name and Password of the wireless router (default username: **admin**, default password: **admin**, both in **lower case** letters) and then click **Log On**.

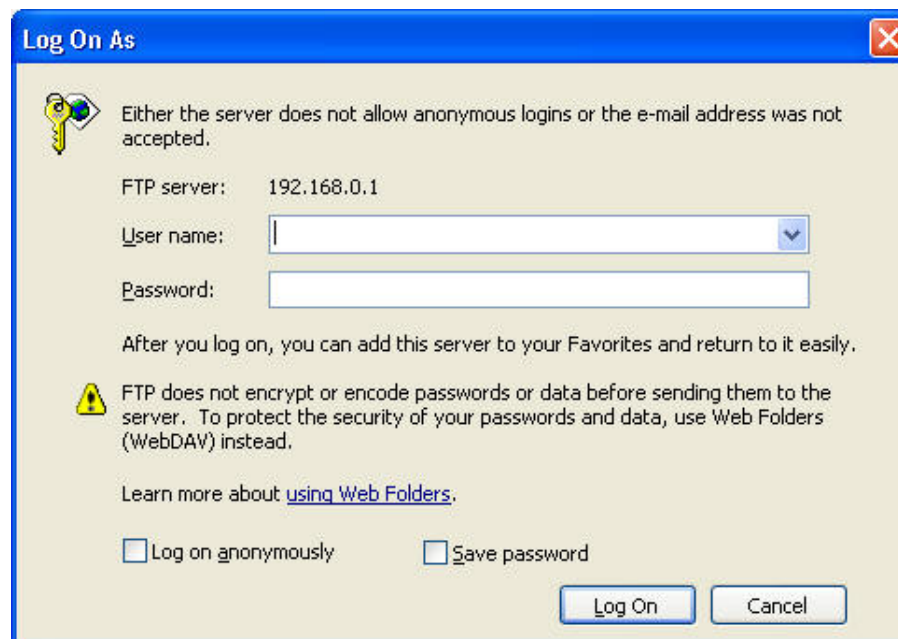


Figure 3-13

5. Now you can see the IE as below, double-click the folder **TP-LINK**.

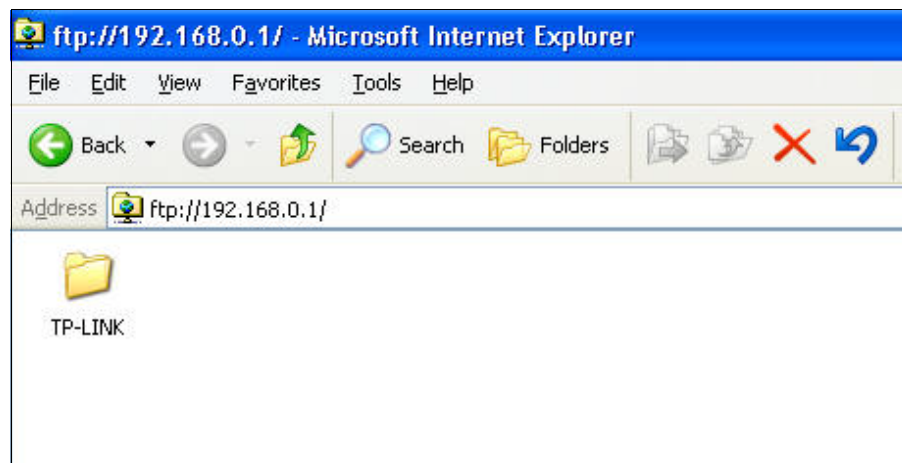


Figure 3-14

6. You will see the files contained in **TP-LINK** as below:

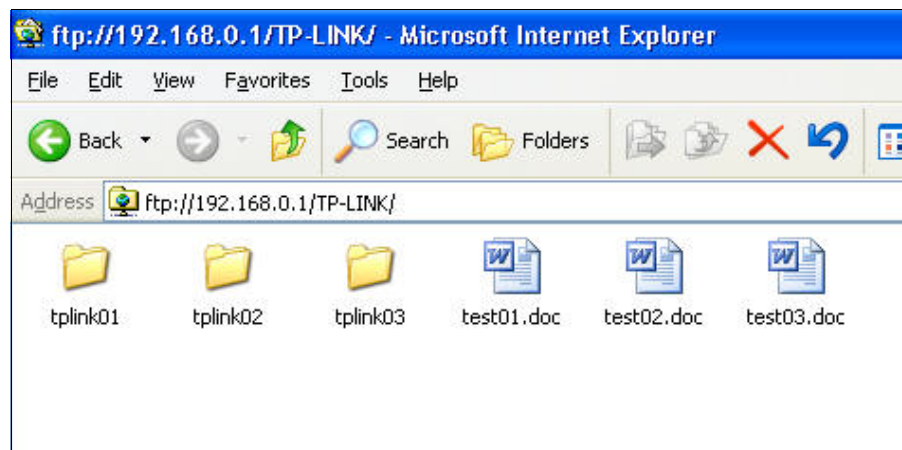


Figure 3-15

7. To open a folder, right click the folder, for example tplink02, and select Open option. To download a file, right click the file, for example test03.doc, and select Copy option.

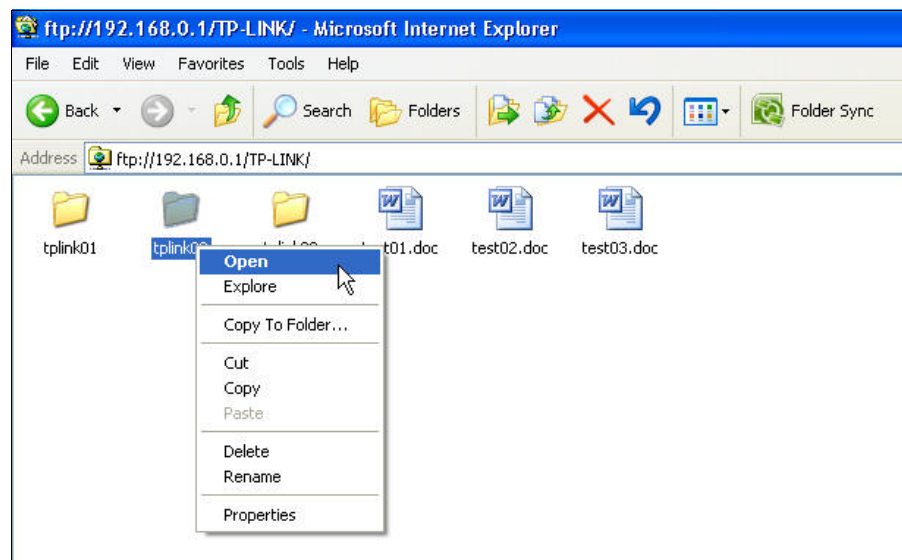


Figure 3-16

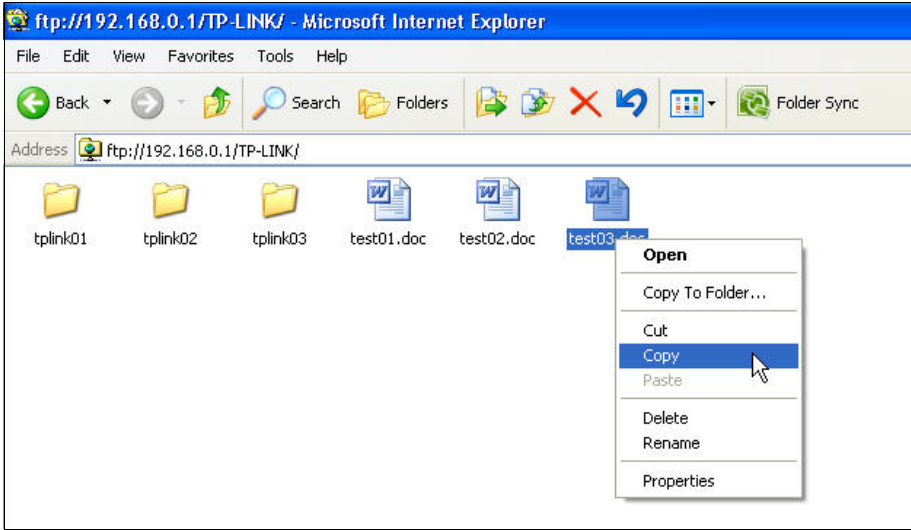


Figure 3-17

**Note:**

When trying to open the file by double-clicking the file, an error will occur as shown in Figure 3-18. We recommend that you use **Copy and Paste** method to download the file on FTP Server.



Figure 3-18

# Chapter 4. Access via PC Client Software

Here we take **CuteFTP Professional 8** for example.

## 4.1 WAN Access

1. Open the CuteFTP and it will show as below.

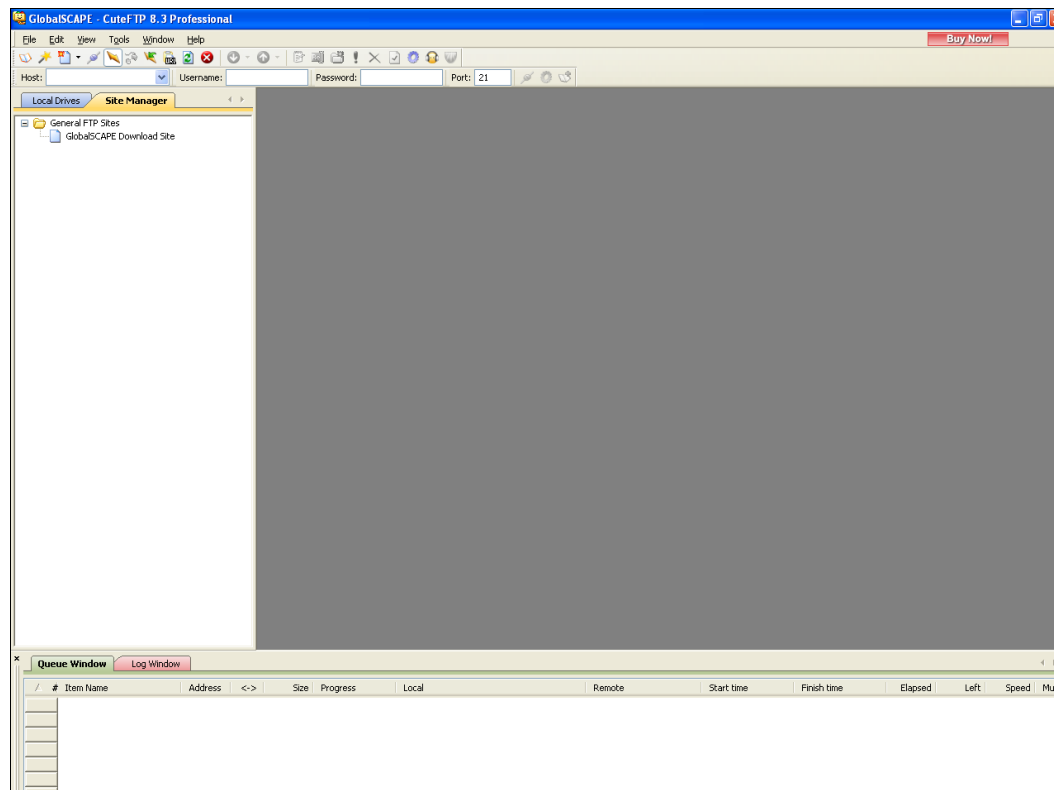


Figure 4-1

2. Go to **File->New->FTP Site** or press **Ctrl+N** to open a new **Site properties**.

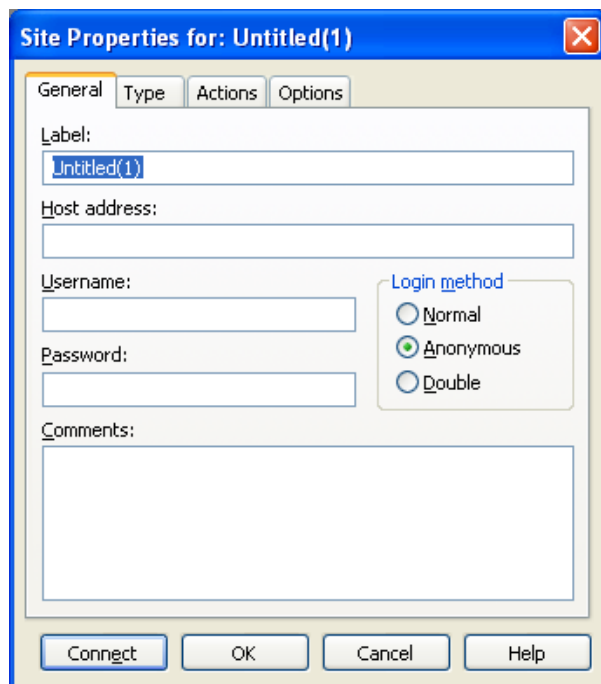


Figure 4-2

3. Set the dialog box as below and click **Connect**.

**Label:** Name of the site.

**Host address:** The Internet Address of **FTP Server** configuration page (Here is 218.18.0.163).



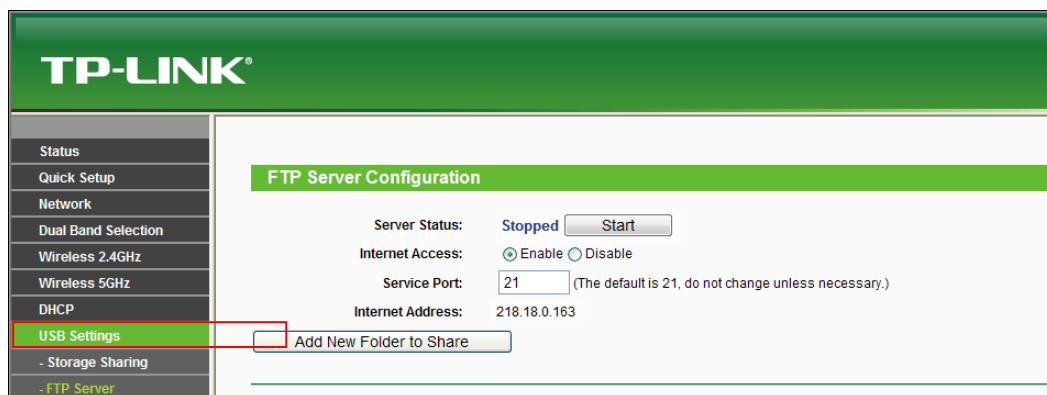


Figure 4-3

**Username:** Default setting of the wireless router is **admin** in lower case letters.

**Password:** Default setting of the wireless router is **admin** in lower case letters.

**Comments:** The information that you want to record for the specific site.

**Login method:** select **Normal**

- **Normal** - The user name and password are mandatory to connect to a site.
- **Anonymous** - The site does not require any user name and password.
- **Double** - The user name and password are required twice to connect to a site.

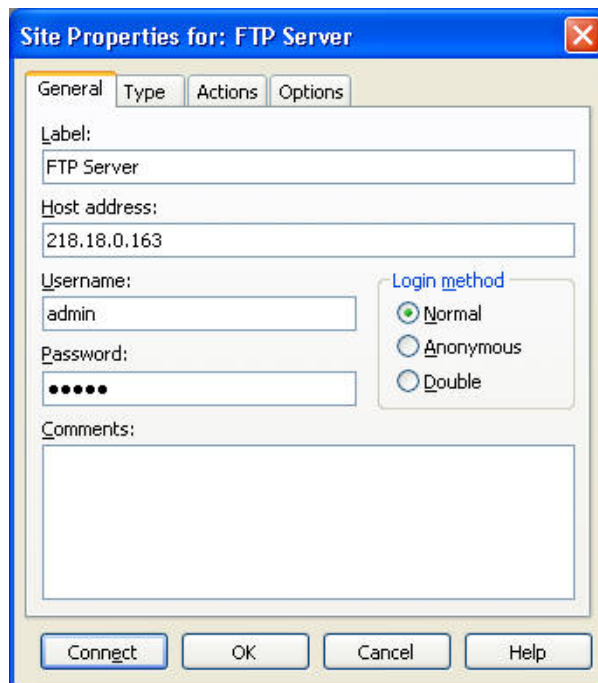


Figure 4-4

4. Now you can see the folder **TP-LINK** in the panel. Double-click the folder.

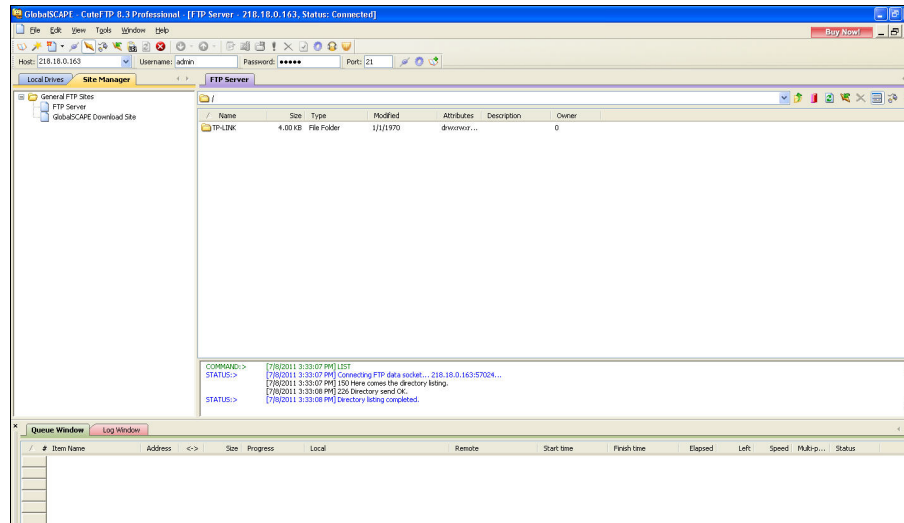


Figure 4-5

5. You will see three subfolders and three files in the **TP-LINK** folder.

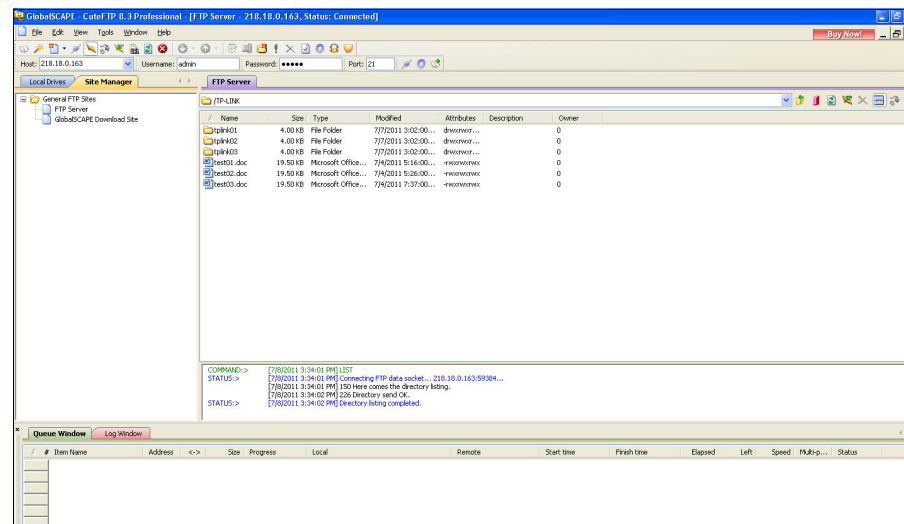


Figure 4-6

6. Double-click a file and it will be downloaded automatically.

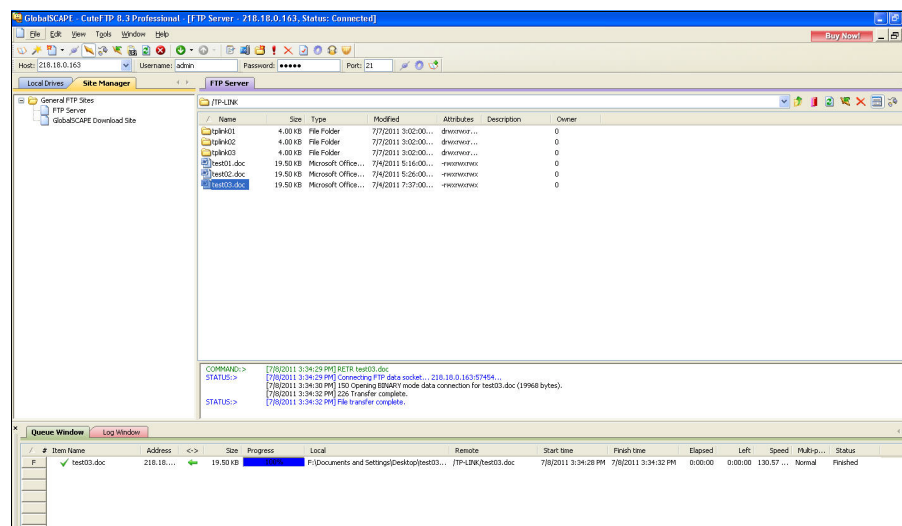


Figure 4-7

### Note:

When you connect to a site, your **My Documents** folder is the default local folder to save your downloaded files, and the default remote folder is the folder specified when you configured the site. You can specify a different local folder and/or remote folder to appear in the Local and Remote panels when you log in to a site.

## 4.2 LAN Access

1. Go to **Start->Run**, input **cmd** as shown below and then click **OK** or press **Enter** key.

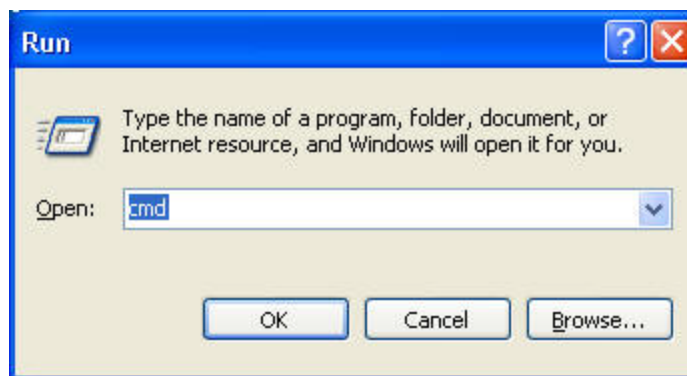


Figure 4-8

2. You will see the interface as below.

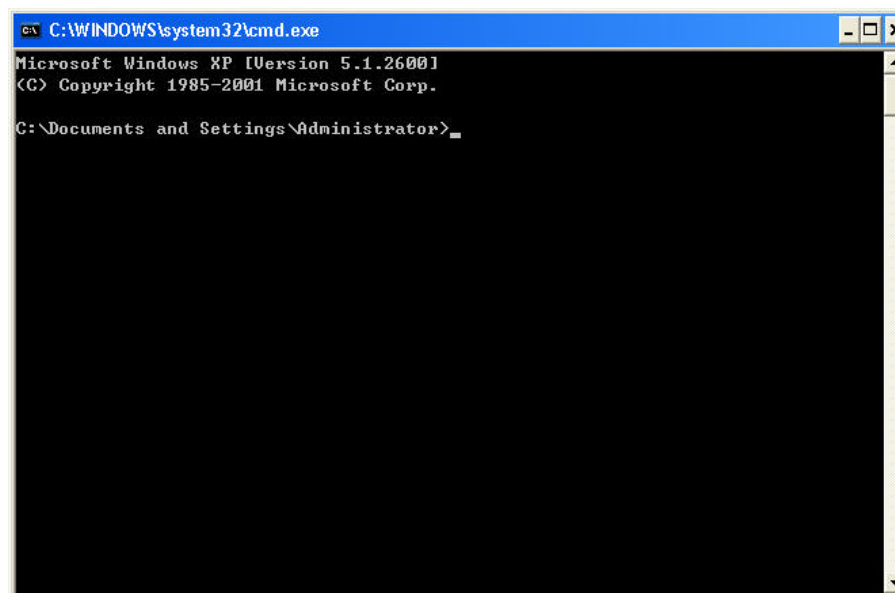
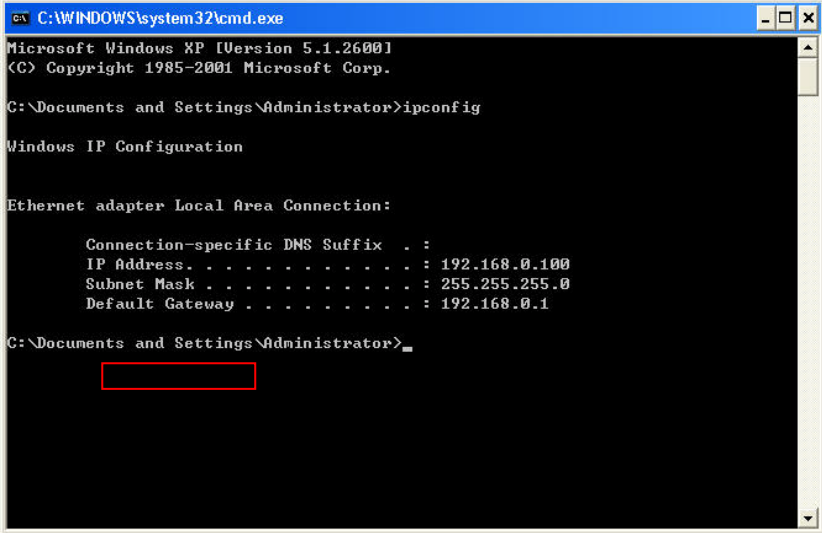


Figure 4-9

3. Follow the cursor, input **ipconfig** and press **Enter** key. Write down the IP address of **Default Gateway** as shown in Figure 4-10. (Here is 192.168.0.1).



```
C:\WINDOWS\system32\cmd.exe
Microsoft Windows XP [Version 5.1.2600]
(C) Copyright 1985-2001 Microsoft Corp.

C:\Documents and Settings\Administrator>ipconfig

Windows IP Configuration

Ethernet adapter Local Area Connection:

    Connection-specific DNS Suffix  . : 
    IP Address . . . . . : 192.168.0.100
    Subnet Mask . . . . . : 255.255.255.0
    Default Gateway . . . . . : 192.168.0.1

C:\Documents and Settings\Administrator>_
```

Figure 4-10

4. Open the CuteFTP and it will show as below.

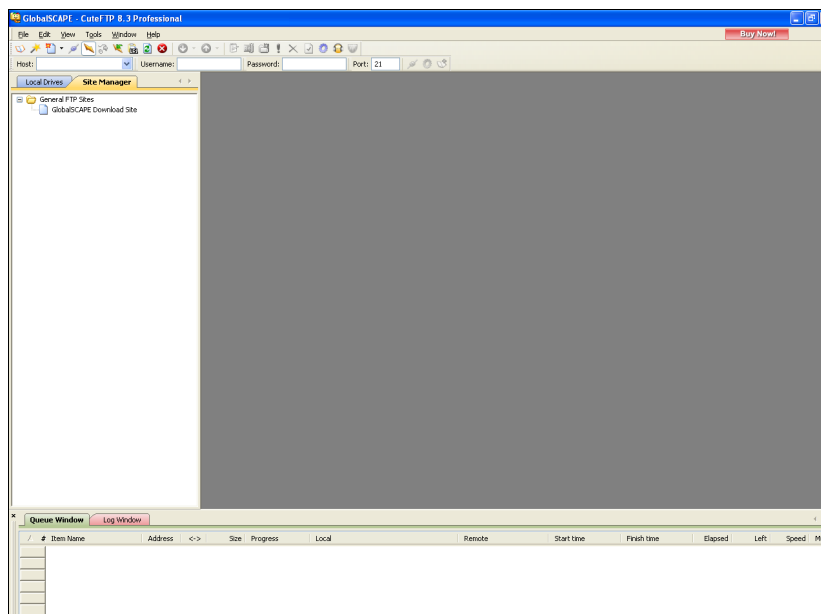


Figure 4-11

5. Go to **File->New->FTP Site** or press **Ctrl+N** to open a new **Site properties**.

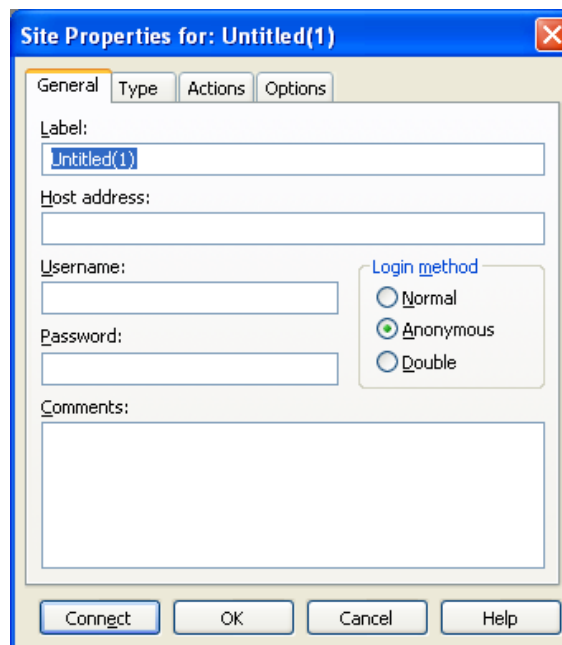


Figure 4-12

6. Set the dialog box as below and click **Connect**.

**Label:** Name of the site.

**Host address:** The IP of the **Default Gateway** written down in Step 3 (here is 192.168.0.1).

**Username:** Default setting of the wireless router is **admin** in lower case letters.

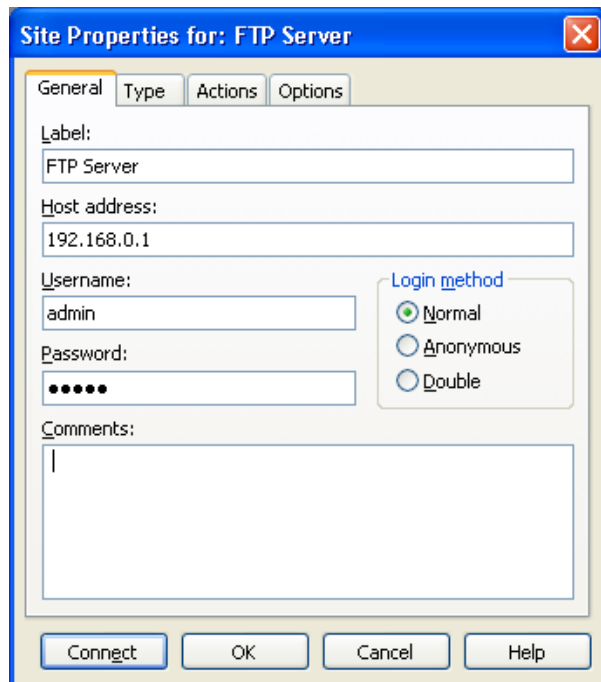
**Password:** Default setting of the wireless router is **admin** in lower case letters.



**Comments:** The information that you want to record for the specific site.

**Login method:** Select **Normal**.

- **Normal** - The user name and password are mandatory to connect to a site.
- **Anonymous** - The site does not require any user name and password.
- **Double** - The user name and password are required twice to connect to a site.



The screenshot shows a dialog box titled "Site Properties for: FTP Server". It has four tabs: "General", "Type", "Actions", and "Options". The "General" tab is active. The fields are as follows:

- Label:** FTP Server
- Host address:** 192.168.0.1
- Username:** admin
- Password:** masked with seven dots
- Comments:** an empty text area
- Login method:** Radio buttons for "Normal" (selected), "Anonymous", and "Double".

At the bottom, there are four buttons: "Connect", "OK", "Cancel", and "Help".

Figure 4-13

7. Now you can see the folder **TP-LINK** in the panel. Double-click the folder.

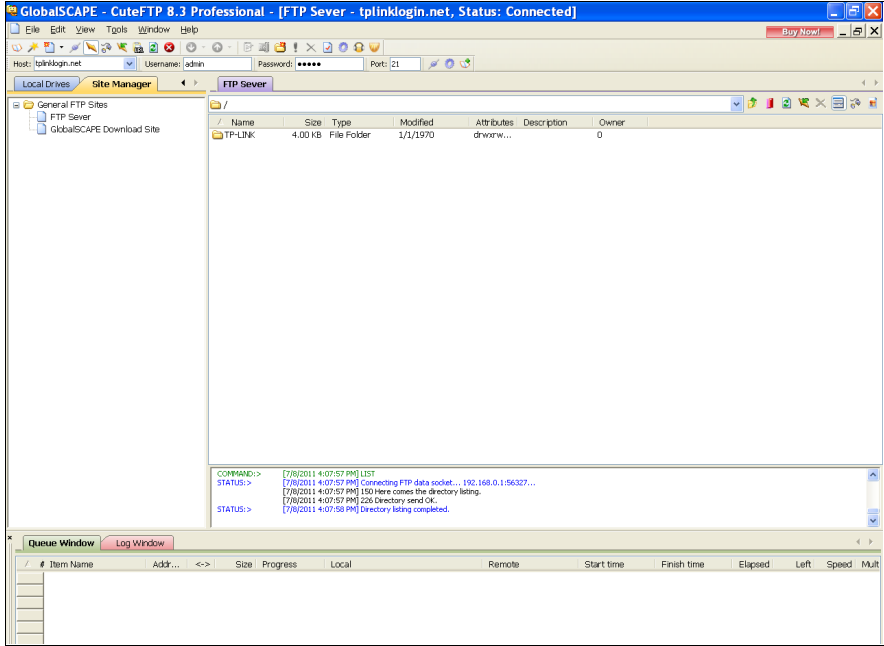


Figure 4-14

8. You can see three subfolders and three files in the **TP-LINK** folder.

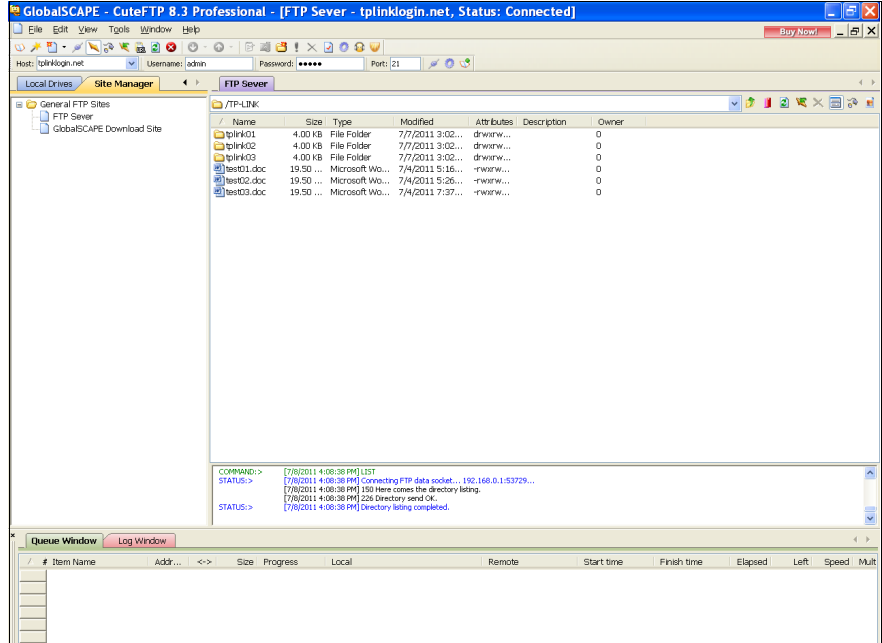


Figure 4-15

9. Double-click a file and it will be downloaded automatically.

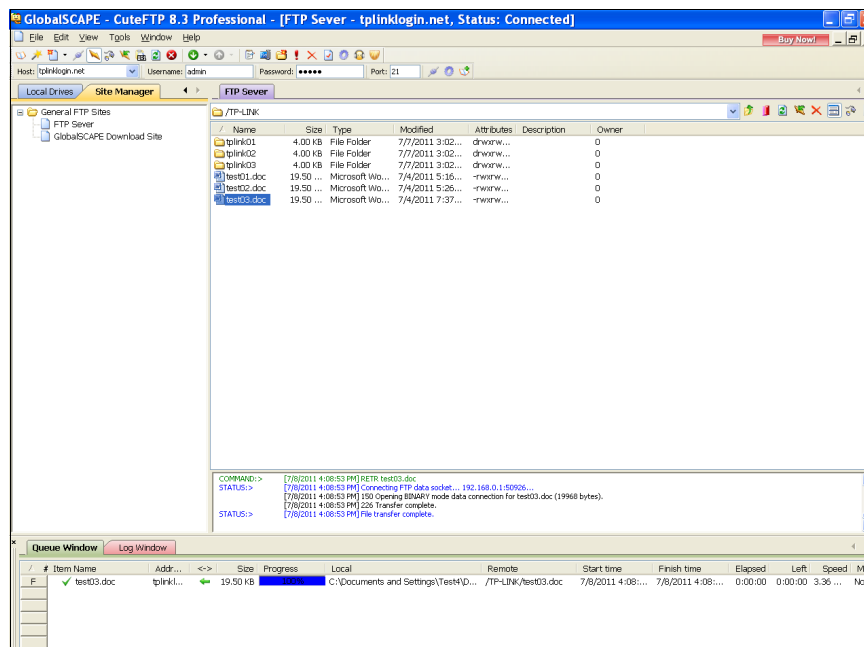


Figure 4-16

### Note:

When you connect to a site, your **My Documents** folder is the default local folder to save your downloaded files, and the default remote folder is the folder specified when you configured the site. You can specify a different local folder and/or remote folder to appear in the Local and Remote panels when you log in to a site.